



## MINIPlayer Trio

Solutions is the more light mp3 reproduction software that can be used from a website as a special feature.



© TRIO Solutions

MINIPlayer Trio Solutions is an mp3 format audio reproduction software that can be used from a website as a special feature. MINIPlayer is developed in Flash and runs with flash player 7 or later. With MINIPlayer, the user can customize several functions of the starting player. MINIPlayer is distributed in two different versions:

- as a Dreamweaver component (mxp)
- as a Flash movie in a .zip file along with the following files: readme.txt, the audio player MINIPlayer.swf, the configuration file configuration.xml and a playlist file as demo playlist.xml.

#### **N O T I C E :**

Acceptable bit rate values are “8 kbps”, “16 kbps”, “20 kbps”, “24 kbps”, “32 kbps”, “48 kbps”, “56 kbps”, “64 kbps”, “80 kbps”, “112 kbps”, “128 kbps”, and “160 kbps” for MP3 compression.



- 1.- Previous Button
- 2.- Play Button
- 3.- Pause Button
- 4.- Stop Button
- 5.- Next Button
- 6.- Timer
- 7.- Song Data / Action Name
- 8.- Repeat Button
- 9.- Shuffling Button
- 10.- Equalizer
- 11.- Seeking Bar
- 12.- Volume Control

## AS A COMPONENT

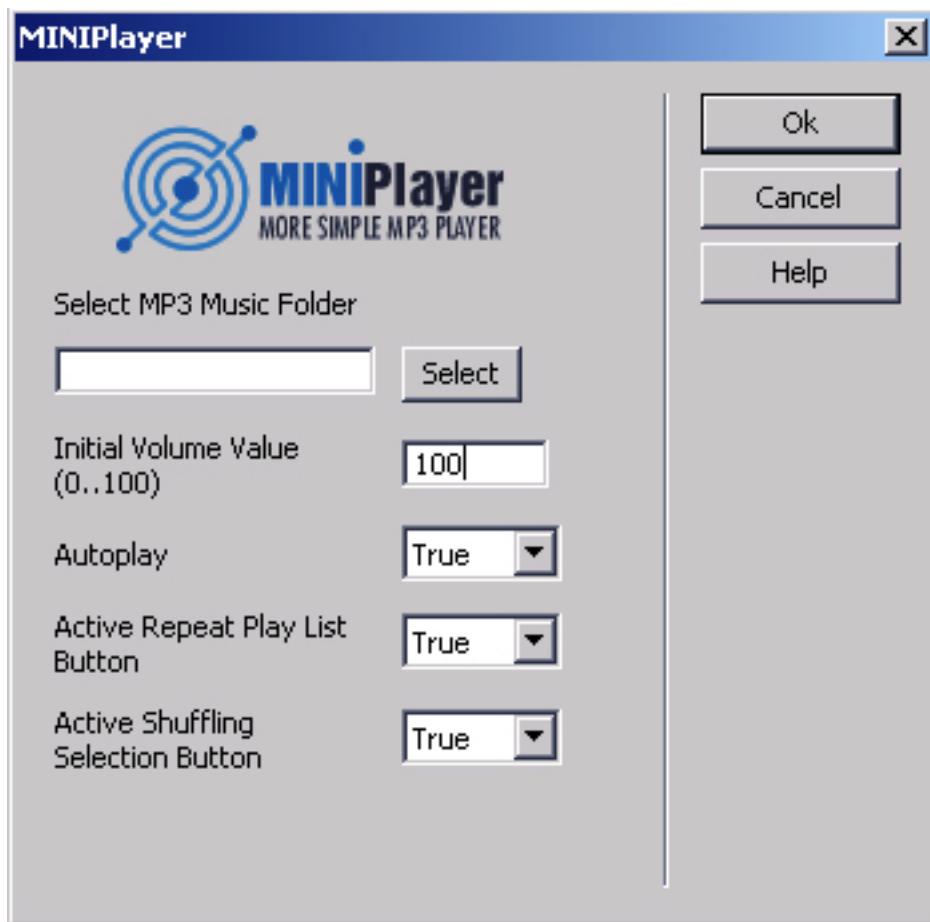
If you have installed the Macromedia extension manager, double clicking in the mpx downloaded from our web site will install the component to be used from dreamweaver and the user will be able to insert it in just few simple steps in your web pages; the component will be visible in the Dreamweaver Commands menu under the option named MINIPlayer. To use this component the user must have configured the website he's working with and saved the current page in which the player will be inserted, required steps to allow the player to calculate the URL relative addresses between the page that will host the audio player and music files to be played.

To MINIPlayer Trio Solutions in your website select the option MINIPlayer under the Commands menu in Dreamweaver; it will open an insertion/configuration window in which a text field will appear to select the folder where the music files to play on the website are stored. This directory must be placed inside the website.

In the next step of the MINIPlayer configuration the user must set a group of options:

- "Autoplay" will allow the user to choose between starting playing the first file on the playlist or starting off until the user selects a file from the playlist or clicks on the button "play".
- "Toggle Repeat" allows to choose if the user wants this option active by default. "Toggle Shuffling" allows to choose if the user wants shuffling active by default.
- "Volume Value" allows to enter the desired starting music volume choosing a number between 0 y 100.

When pressing "Ok" a folder named MINIPlayer will be created in your website, including file named playlist.xml that contains the list of mp3 files that are gonna be played on your website, a file named configuration.xml will be created inside the MINIPlayer folder that can be edited if you want to change the default configuration.



## DISTRIBUTED AS SWF

Unpack the .zip file downloaded from our website, named MINIPlayer.zip, copy inside your website directory the folder named MINIPlayer, which contains the file MINIPlayer.swf, the file configuration.xml and the file playlist.xml on your website.

1) Open the file configuration.xml inside Dreamweaver or any other text editor. This file contains the options to configure the mp3 player and plays a key part in the good functioning of MINIPlayer. Configuration.xml has the following structure:

```
<?xml version="1.0" encoding="iso-8859-1"?>
<MINIPlayer>
  <functionality>
    <autoplay>1</autoplay>
    <volume>100</volume>
    <repeat>0</repeat>
    <shuffling>1</shuffling>
  </functionality>
</MINIPlayer>
```

Where:

`<autoplay></autoplay>` This option is used to select if the user wants the player to load playing the first song of the playlist. The values allowed are 1 (the player loads playing the first song of the playlist) or 0 (the player loads stopped until the user clicks on some action)

`<volume></volume>` This option lets the user configure the default volume when the player loads. The values are the numbers between 0 and 100.

`<repeat></repeat>` This option configures if the player starts with a default cyclic playlist reproduction or not. The values are 1 "or" 0.

`<shuffling></shuffling>` This option configures if the player's selection from the playlist will be random or not. The values are: 1 (activated) "or" 0 (deactivated).

2) Open the file playlist.xml inside Dreamweaver or any other text editor. This file contains the list of the .mp3 files that will be reproduced in your website. playlist.xml has the following structure:

```
<?xml version="1.0" encoding="iso-8859-1"?>
<playlist>
  <element url="../music/1.mp3" />
  <element url="../music/2.mp3" />
  <element url="../music/3.mp3" />
</playlist>
```

Where every tag element contains the URL to the mp3 file that will be reproduced, this URL can be absolute inside the website (ex. <http://www.mywebaddress.com/music/skin/musicname.mp3>) or relative to the web page where the player will be inserted (ex. [music/musicname.mp3](#) in case that the music folder and the web page where the player will be inserted are on the same level).

And, at the end, inside the tag `<body></body>` of the web page where the player will be inserted, insert the following text:

```
<object classid="clsid:d27cdb6e-ae6d-11cf-96b8-444553540000"
codebase="http://fpdownload.macromedia.com/pub/shockwave/cabs/flash/
swflash.cab#version=7,0,0,0" width="300" height="26" align="middle">
<param name="allowScriptAccess" value="sameDomain" />
<param name="movie" value="<MINIPlayer.swf address>" />
<param name="quality" value="high" />
<param name="bgcolor" value="#ffffff" />
<param name="FlashVars" value="playlistfile=<playlist.xml address>& configura
tionfile=<configuration.xml address>" />
<embed src="<MINIPlayer.swf address>" quality="high" FlashVars="playlist
file=<playlist.xml address>& configurationfile=<configuration.xml address>"
bgcolor="#ffffff" width="300" height="26" align="middle" allowScriptAccess="s
ameDomain" type="application/x-shockwave-flash" pluginspage="http://www.
macromedia.com/go/getflashplayer" />
</object>
```

Where “`<MINIPlayer.swf address>`” is the URL to the file `MINIPlayer.swf`. This URL can be absolute inside the website or relative to the page where the player will be inserted.

Where “<configuration.xml address>” is the URL to the file configuration.xml. This URL can be absolute inside the website or relative to the page where the player will be inserted.

Where “<playlist.xml address>” is the URL to the file playlist.xml. This URL can be absolute inside the website or relative to the page where the player will be inserted.



MINIPlayer enjoys great popularity among the clients that use it because of the wide range of options it provides and the professional designed available for it.

<http://components.developers4web.com>